

1420/61

1420/38

1034/159

1034/110

1982-4

1982-24

1982-12

1982-13

1034/158

1466/161

1466/3

1466/162

1466/138

1466/139

1885-19

1885-18

53.81

2167-1

32.84

1885-11

(62.93)

53

11.09

54

11.80

55

27.16

56

13.65

57

13.43

58

24.11

55

1034/165

1034/160

1034/166

1034/157

1466/198

1466/199

1466/200

1466/201

1466/202

1420/60

1420/63

880

1328-140

1403/2

1395/2

1885-17

835-852

278-1

1598-1553

1598-1512

1598-1538

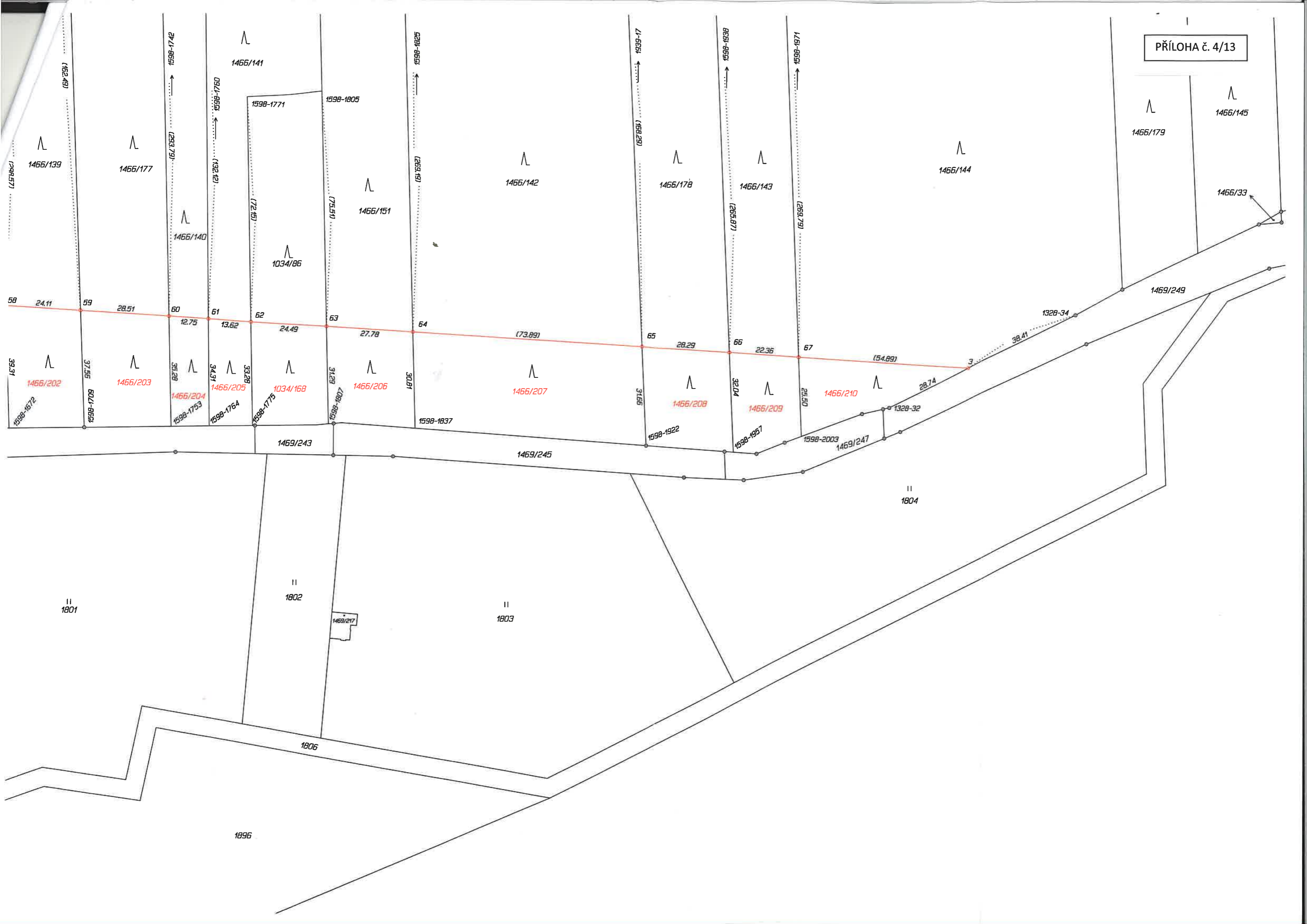
1598-1672

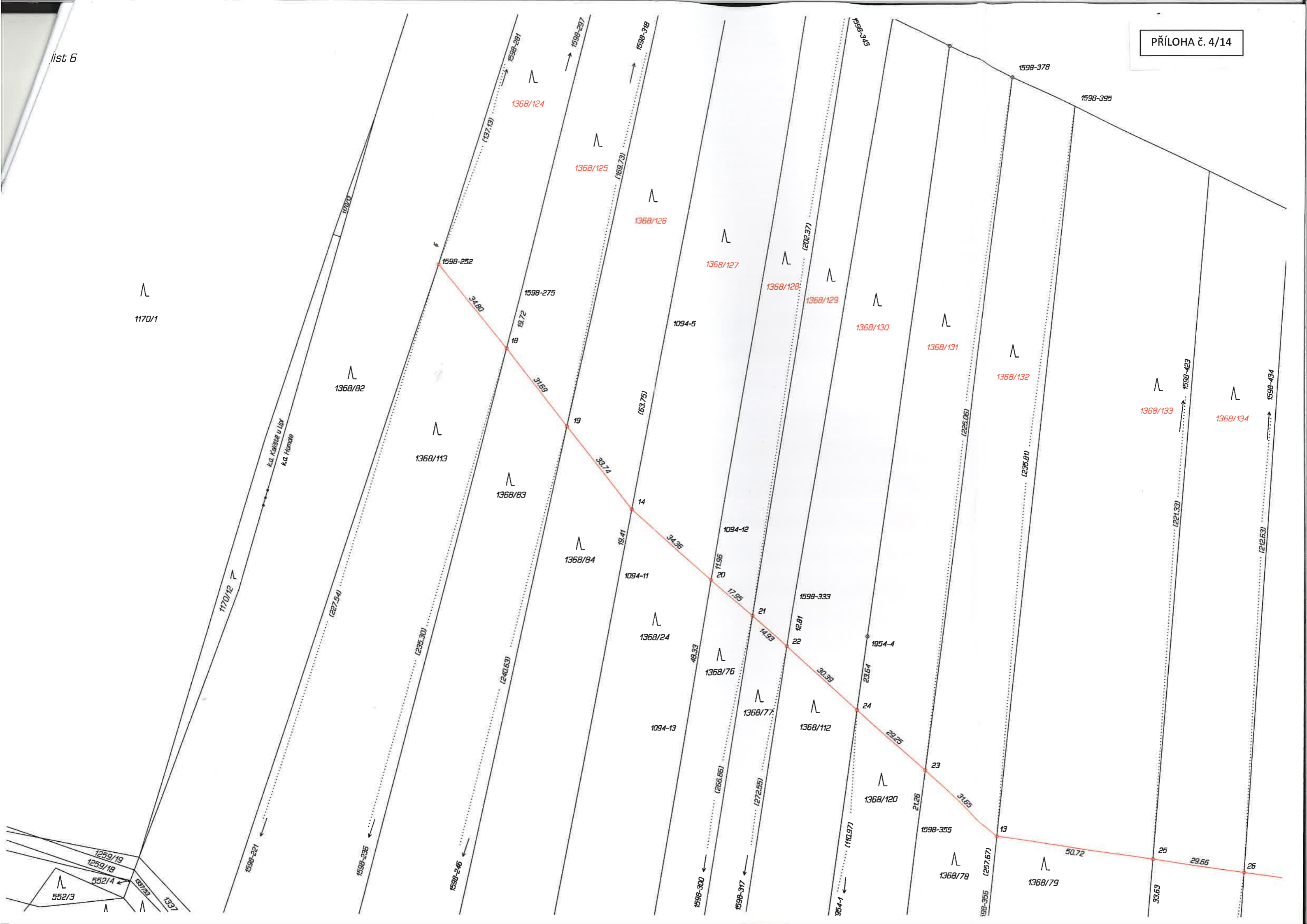
37.96

11  
1800

11  
1801

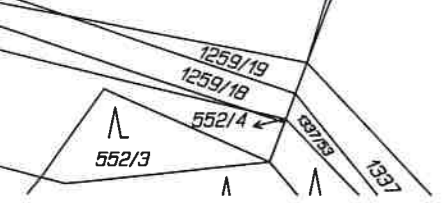
1420/78



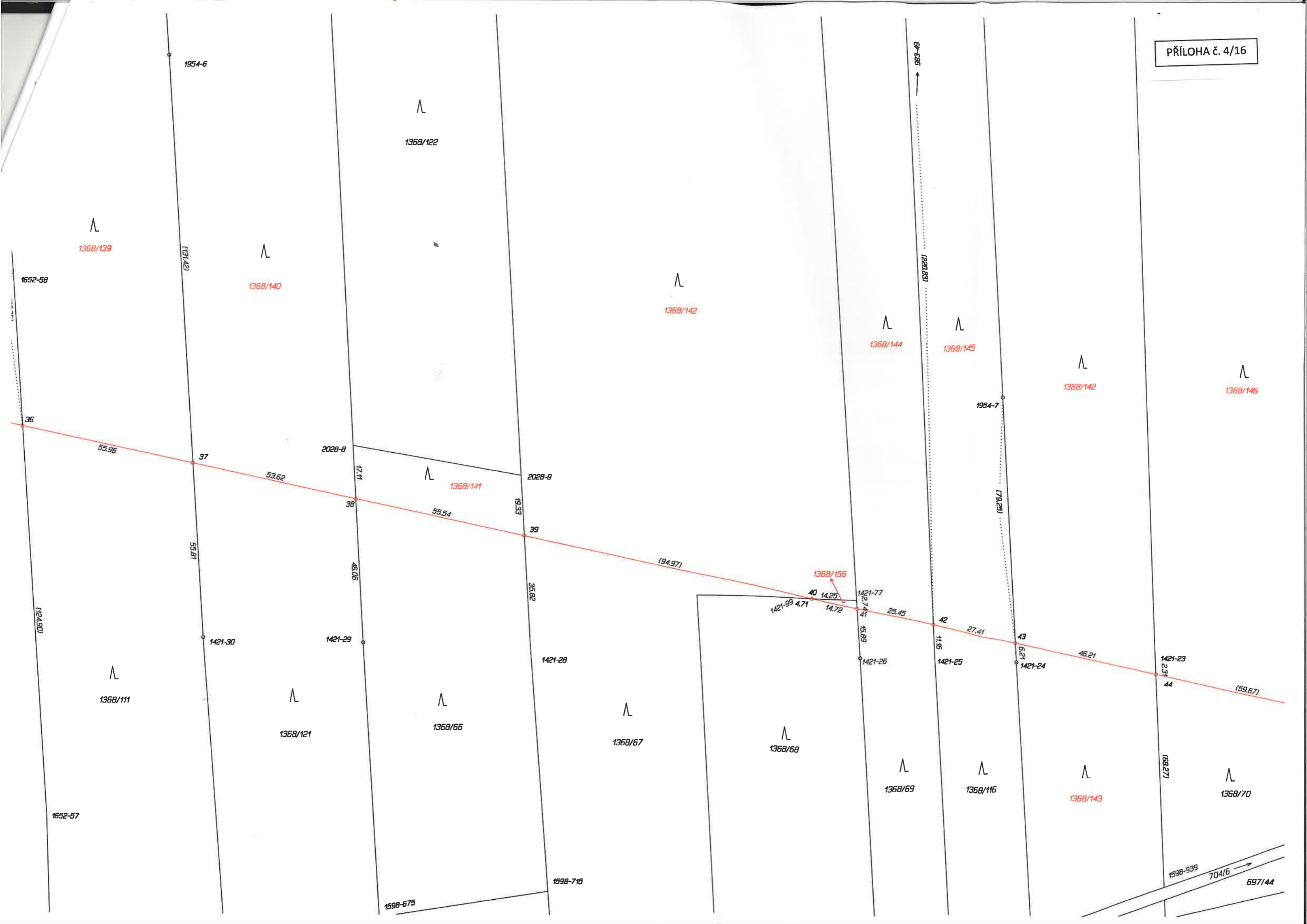


1170/1

k.o. Kralupy u Lyp  
k.o. Horní







1954-6

1368/122

1368/139

1368/140

1368/142

1368/144

1368/145

1368/142

1368/146

1652-58

(131,42)

36

55,96

37

53,62

2028-9

17,11

38

1368/141

2028-9

19,33

39

55,54

(94,97)

1368/156

40

14,25

1421-77

1421-99

4,71

14,72

41

25,45

1421-26

15,89

42

11,95

1421-25

27,41

43

6,21

1421-24

46,21

1421-23

2,31

44

(59,67)

(124,90)

55,81

1421-30

1421-29

46,05

1421-28

35,82

1368/67

1368/68

1368/69

1368/116

1368/143

1368/70

1368/111

1368/121

1368/66

1368/67

1368/68

1368/69

1368/116

1368/143

1368/70

1652-57

1598-675

1598-715

1598-939

704/6

697/44

983-49  
(220,63)

1954-7

(79,25)

(68,27)





1394

648/55

644/5

202/7

1879

645/1

202/6

645/5

1929-582

76

1878/1

1878

1877

1876

1875

1874

1873

1886

1885

1884

648/54

202/66

202/19

645/3

1574-20

202/53

202/55

202/54

1872

1871

1870

1868

645/2

645/4

20/75

189/36

22.52

1555-2

1598-1520

75

1598-1522

190/1

190/3

190/4

190/6

190/5

202/20

202/48

202/47

648/1

189/15

648/55

648/69

189